

MALEKKO

MALEKKO POWER MANUAL V.1.2

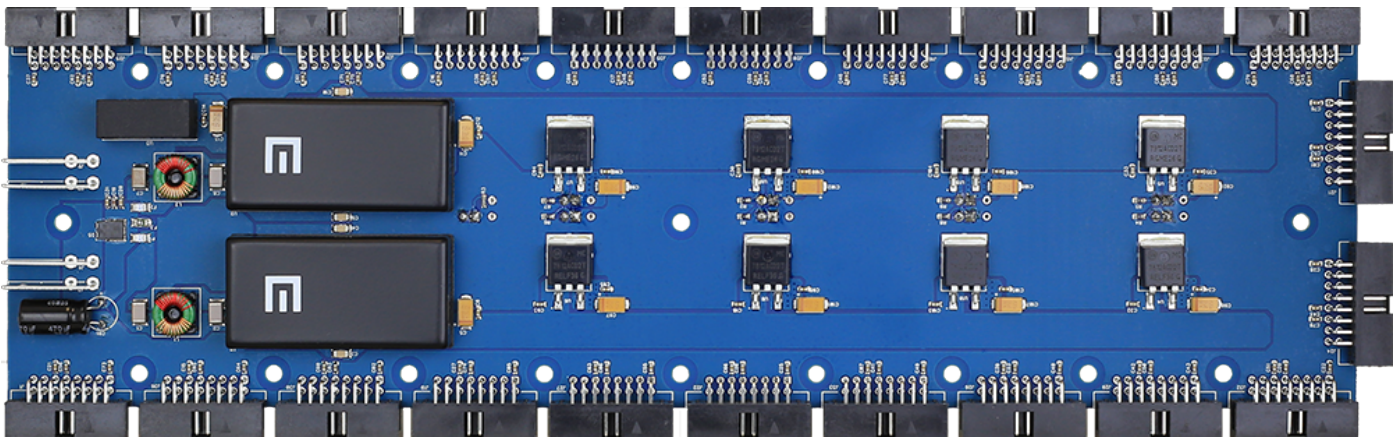
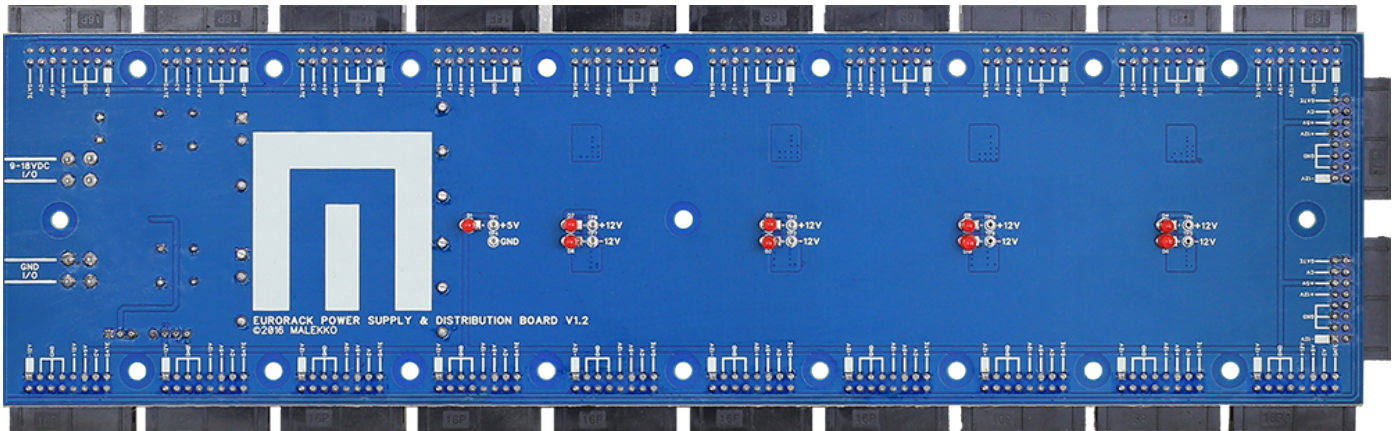




TABLE OF CONTENTS

SPECIFICATIONS	1
+/-12V POWER QUADRANTS	2
ENCLOSURE MOUNTING	3
WIRING DIAGRAM	4
WARRANTY	5



SPECIFICATIONS

FORMAT:

EURORACK

BOARD DIMENSIONS:

310MM x 84.99MM

POWER SPECS:

+12V & -12V outputs at 2 Amps each

+5V output at 1 Amp

DC POWER BRICK SPECIFICATIONS:

9-18VDC, 6Amps, 2.5mm Barrel Connector (Center Positive)

RECOMMENDED DC POWER BRICK:

Mean Well GST90A15-P1M

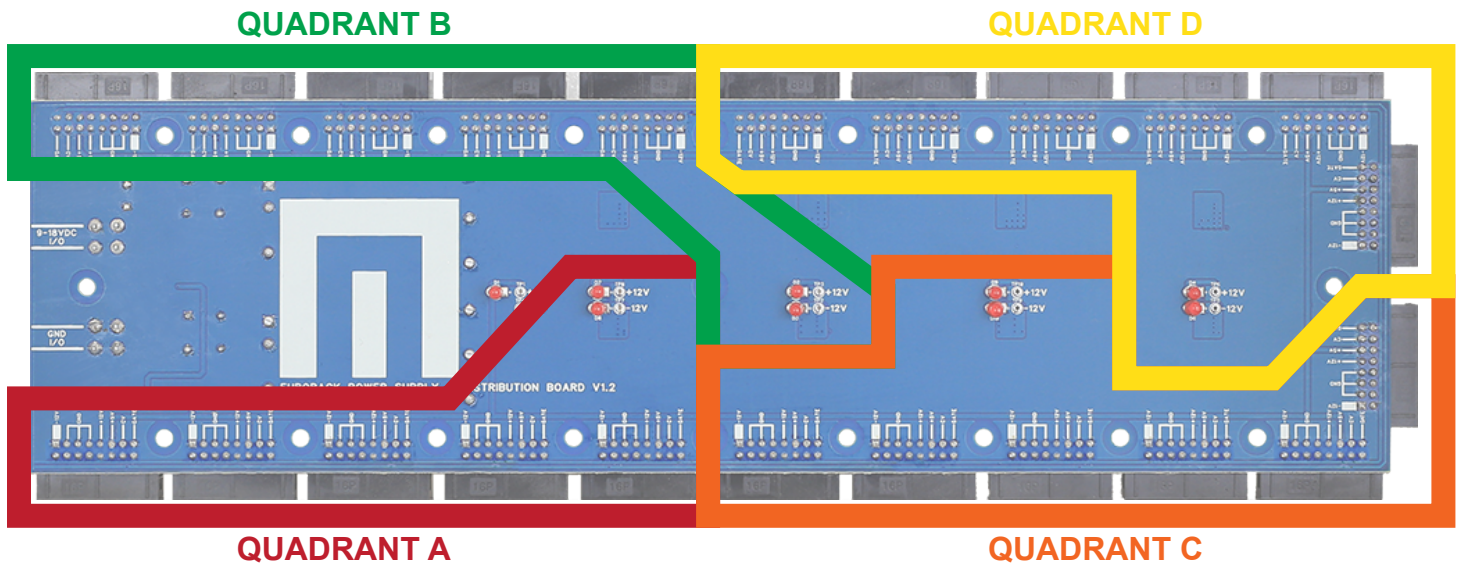
15VDC, 6Amps, 90W MAX, 2.5mm Barrel Connector (Center Positive)

<http://www.mouser.com/Search/ProductDetail.aspx?qs=V113mesSgrhCAod2rat11A%3d%3d>



+/-12V OUTPUT QUADRANTS

Malekko power uses four pairs of linear regulators for +/-12V power outputs. These pairs of regulators feed four different sets of EuroRack power headers as shown below. Since these outputs are isolated from each other, noisier modules may be connected to a specific output quadrant to minimize the bleed of noise into the whole system's power rails.

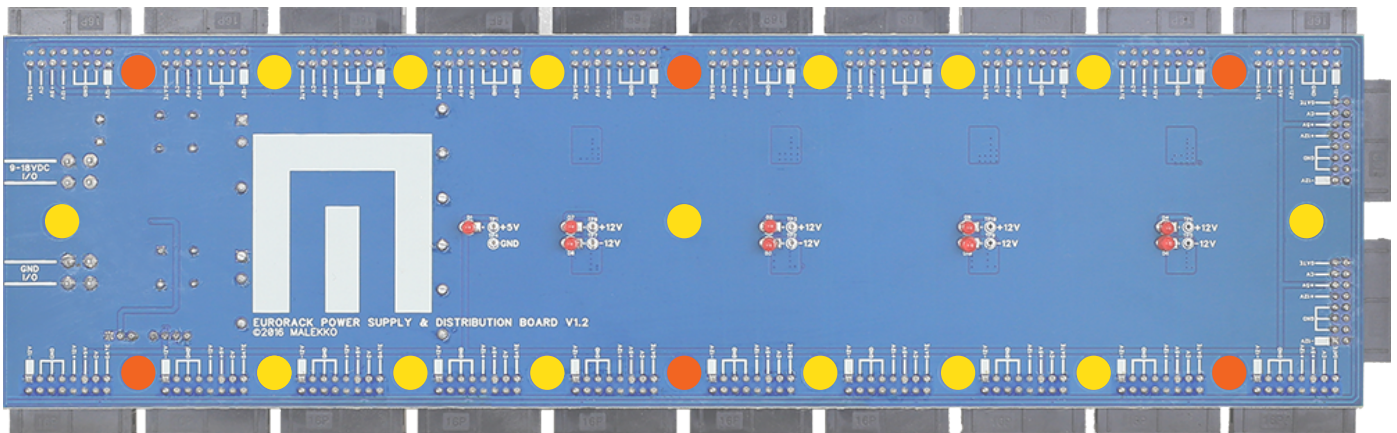




ENCLOSURE MOUNTING

Malekko Power must be attached to your EuroRack case using #6-32 mounting screws and 1/2 inch insulated spacers. The top side (with the big Malekko logo) should be mounted facing upwards as shown. There are 21 mounting holes on the PCB, but only the 6 highlighted ones are necessary for mechanical stability.

Mount with top side facing up.



- Recommended #6-32 screw mounting hole configuration.
- Optional #6-32 screw mounting holes.

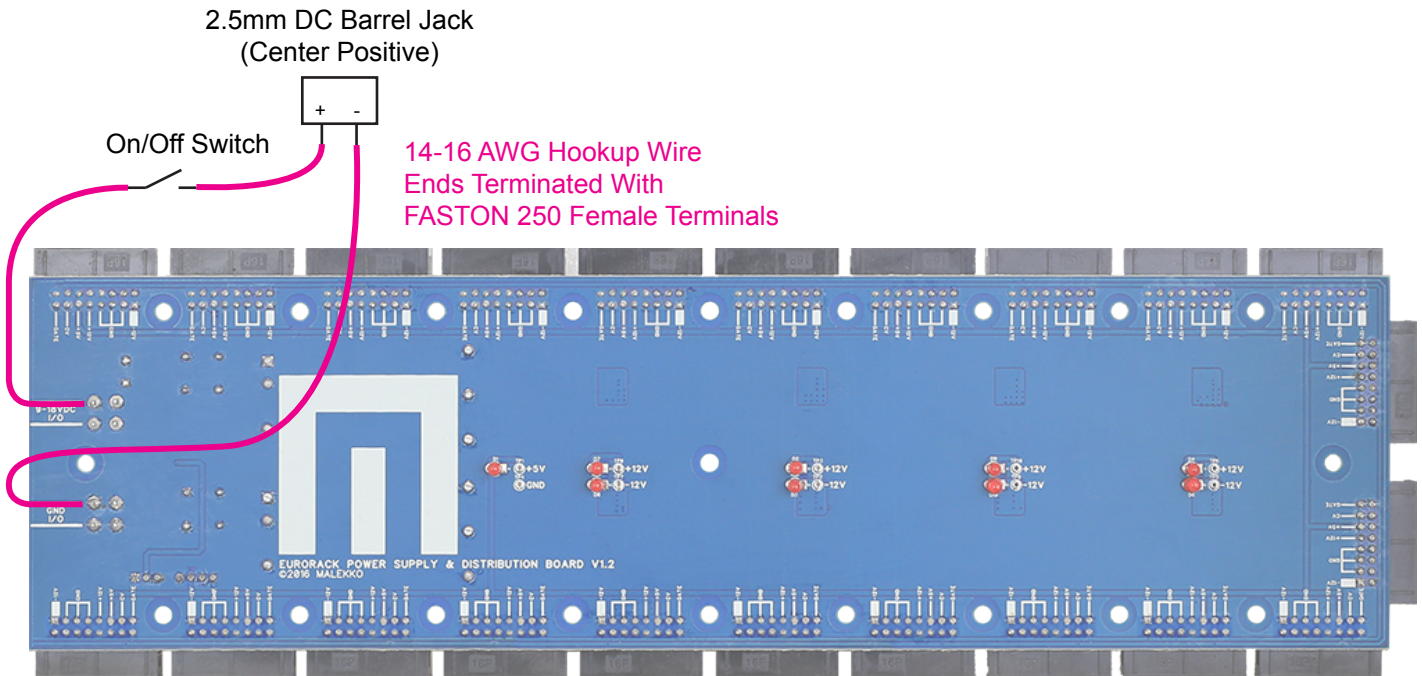
Suggested Supplies for Enclosure Mounting

- (6) #6-32 Insulated Spacers (min. 1/2 inch height)
- (6) #6-32 Machine Screws (1 inch length, variable depending on mounting location width)
- (6) #6-32 Metal Washers & Hex Nuts OR T-Nuts



WIRING DIAGRAM

After mounting in your case, Malekko Power must be wired to your case's on/off switch and a 2.5mm DC Barrel Jack as shown below. The hookup wire ends which attach the power board should be terminated with FASTON 250 Female Terminals for quick connection to the FASTON connectors underneath the PCB.



Suggested Supplies for Wiring

(2) FastOn 250 Female Crimp Terminals

<http://www.mouser.com/ProductDetail/TE-Connectivity-AMP/640905-1/?qs=sGAEpiMZZMt7ScBeCnc0e0jjCjg77r4a>

(1) 2.5mm DC Barrel Jack

(1) SPST On/Off or SPDT On/On Power Switch

A few feet of 14-16AWG Hookup Wire



WARRANTY

This product is covered by the Malekko Heavy Industry warranty, for one year following the date of purchase. This warranty covers any defect in the manufacturing of this product. This warranty does not cover any damage or malfunction caused by incorrect use – such as, but not limited to, power cables connected backwards, excessive voltage levels, or exposure to extreme temperature or moisture levels. The warranty covers replacement or repair, as decided by Malekko Heavy Industry. Please visit our website **malekkoheavyindustry.com** to obtain full warranty information and to register your product for coverage.